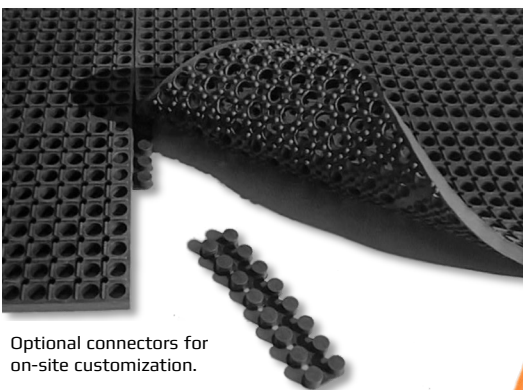
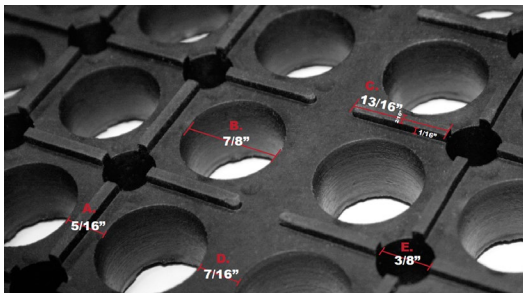
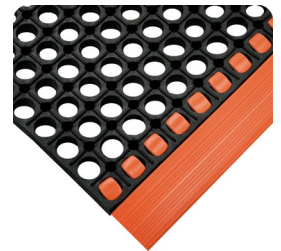
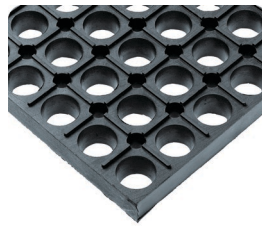


## WORKSAFE® (NO. 477)

### Tough and versatile!

As a single mat or a modular system, WorkSafe provides long-lasting support for demanding areas big and small.

- 7/8" (22 mm) thick
- Super robust, Natural rubber
- Array of connectable sizes
- Optional orange or yellow ramps
- High traction bars



### TWO PURCHASING OPTIONS TO SUIT YOUR NEEDS

1

#### OUT OF THE BOX WORKSTATION MAT

Choose from a wide range of common sizes with edging attached

2

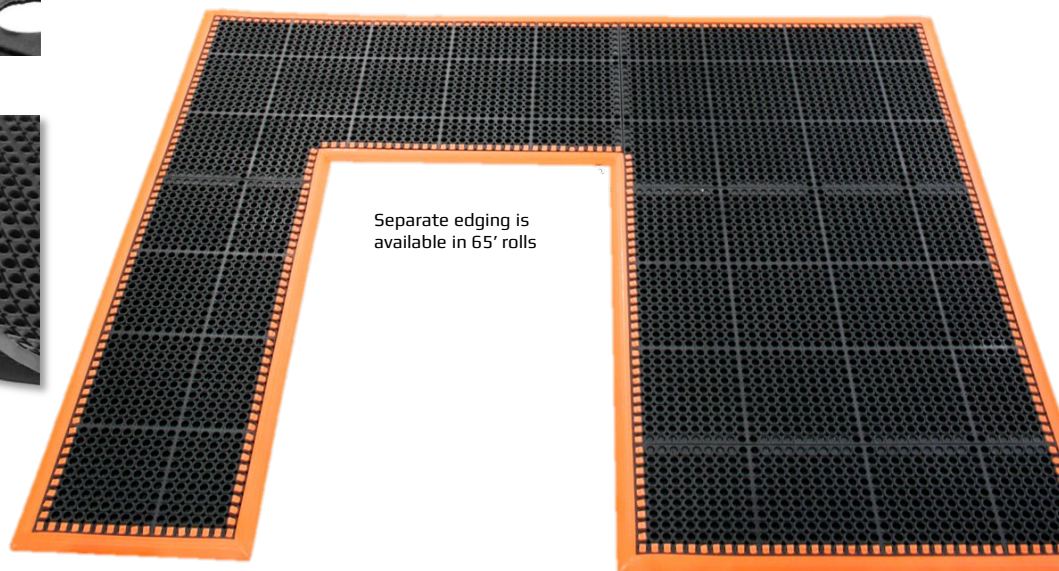
#### CUSTOMIZABLE

Purchase mats, connectors and separate edging to configure on-site!



#### SILICONE-FREE VERSION

Available in the most popular, 3' x 5' (91 cm x 152 cm) size



Need more information or a site-survey? We have a large team of experts to help!

Headquarters: USA  
Wearwell, LLC  
Wearwell.com

CANADA  
Wearwell.com/ca

MEXICO  
Wearwell.com/mx

GERMANY  
Wearwell.com/de

UK  
Wearwell.com/uk

FRANCE  
Wearwell.com/fr