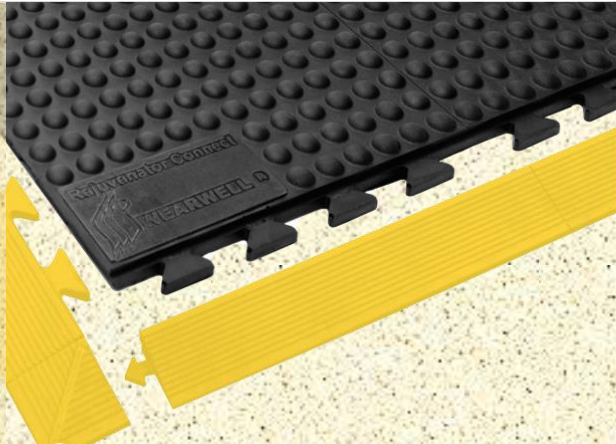


FLOORING

DRY AREAS



- Polyurethane construction delivers exceptional comfort and wear
- Interlock system prevents separation
- Virtually indestructible
- Available in square or dome pattern

REJUVENATOR®

The ultimate ergonomic safety solution for standing and walking workers in dry areas!

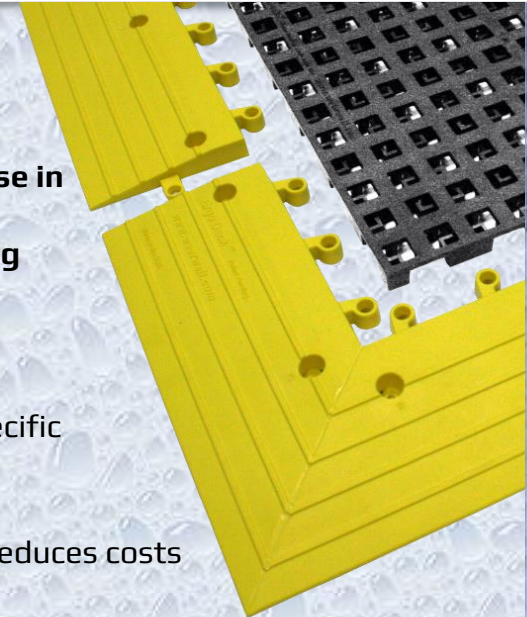
These large modular tiles interlock on all four sides to quickly customize virtually any flooring configuration on-site.

ERGODECK®

This versatile, ergonomic floor system will withstand heavy use in wet areas. The patented LockSafe® Positive Interlocking System delivers secure connections.

Connect any combination of ErgoDeck styles to meet the specific demands of an area.

- Customize in 3" increments
- Ability to replace single tiles reduces costs
- 100% silicone-free PVC tiles



WET AREAS

MATTING

DIAMOND-PLATE SPONGECOTE®

A perfect combination of durability and comfort for standing workers in dry areas!

A Wearwell original, Diamond-Plate has become the matting industry's most popular surface design. However, it's what lies beneath that makes Wearwell mats outperform all others- Nitricell®. This premium nitrile rubber composite sponge is formulated for crush resistance and unmatched performance.

- Best in class performance
- Lay-flat, No-trip design
- Maximum standing area

24/SEVEN®

These rubber 3' x 3' inter-connecting anti-fatigue mats keep workers productive and comfortable in wet areas.

Large holes in drainage version allow fluids and debris to flow through freely. Use with or without edging, individually or connect to others to create a larger mat.

Available in 3 different rubber compounds:

- GR for areas with water
- CFR for areas with mineral oil-based cutting fluids
- NBR for areas with petroleum-based fluids



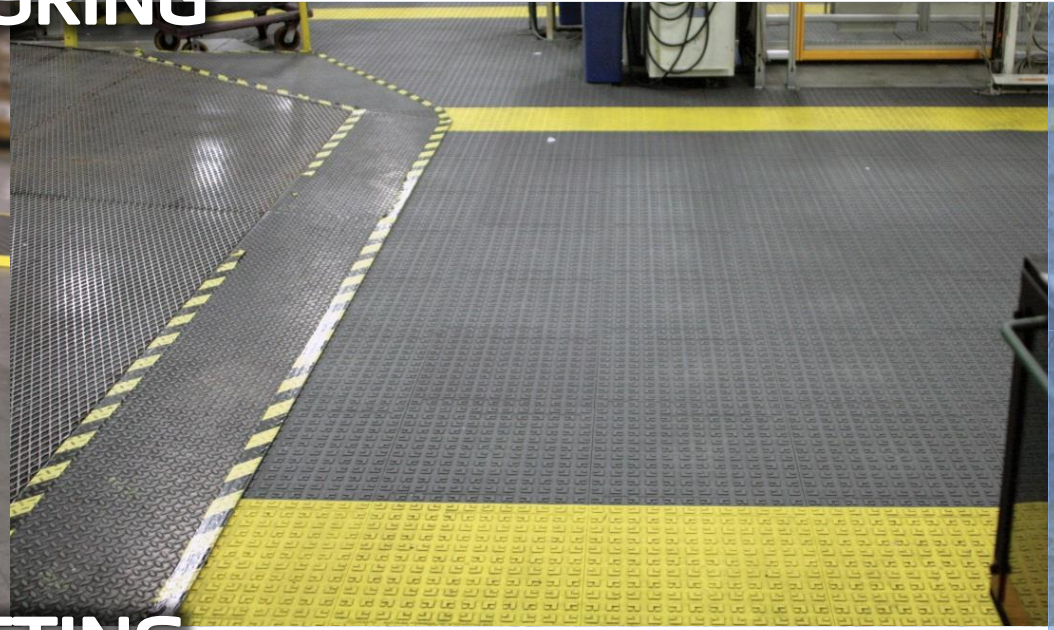
Wearwell, Inc. (North America)
Phone: 1-615-254-8381
E-mail: info@wearwell.com
WWW.WEARWELL.COM

Wearwell Europe Ltd (UK & Ireland)
Phone: 44-1844-212117
info@wearwell-europe.co.uk
WWW.WEARWELL-EUROPE.CO.UK

Wearwell Europe Ltd (Mainland Europe)
Phone: 31-548-659061
europe@wearwell.eu
WWW.WEARWELL.EU

WEARWELL

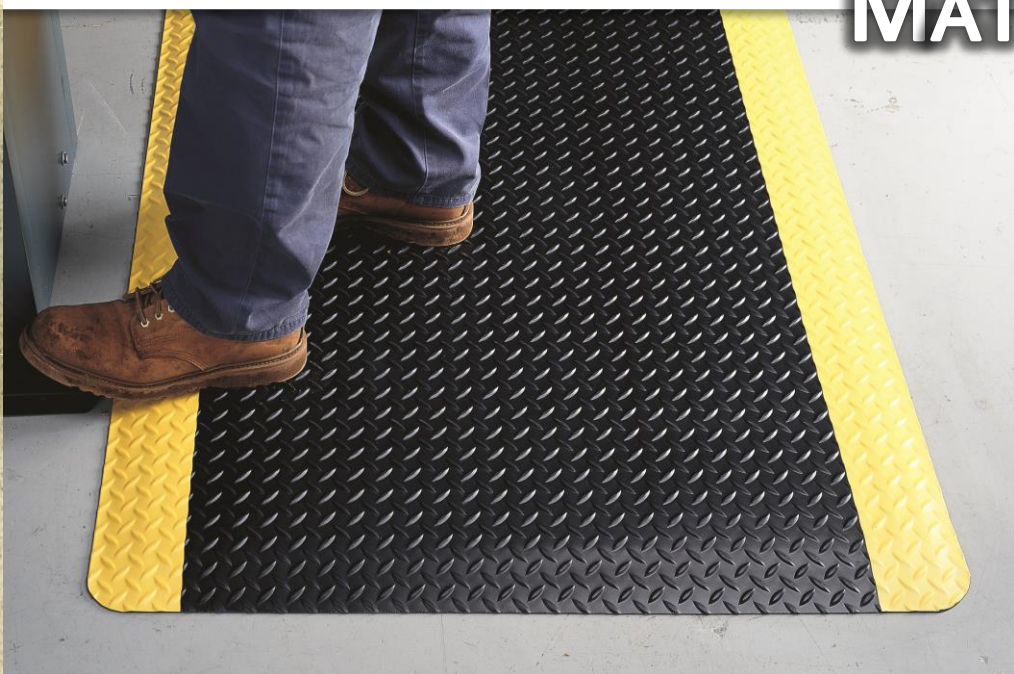
FLOORING



DRY AREAS

WET AREAS

MATTING



Wearwell, Inc. (North America)
Phone: 1-615-254-8381
E-mail: info@wearwell.com
WWW.WEARWELL.COM

Wearwell Europe Ltd (UK & Ireland)
Phone: 44-1844-212117
info@wearwell-europe.co.uk
WWW.WEARWELL-EUROPE.CO.UK

Wearwell Europe Ltd (Mainland Europe)
Phone: 31-548-659061
europe@wearwell.eu
WWW.WEARWELL.EU