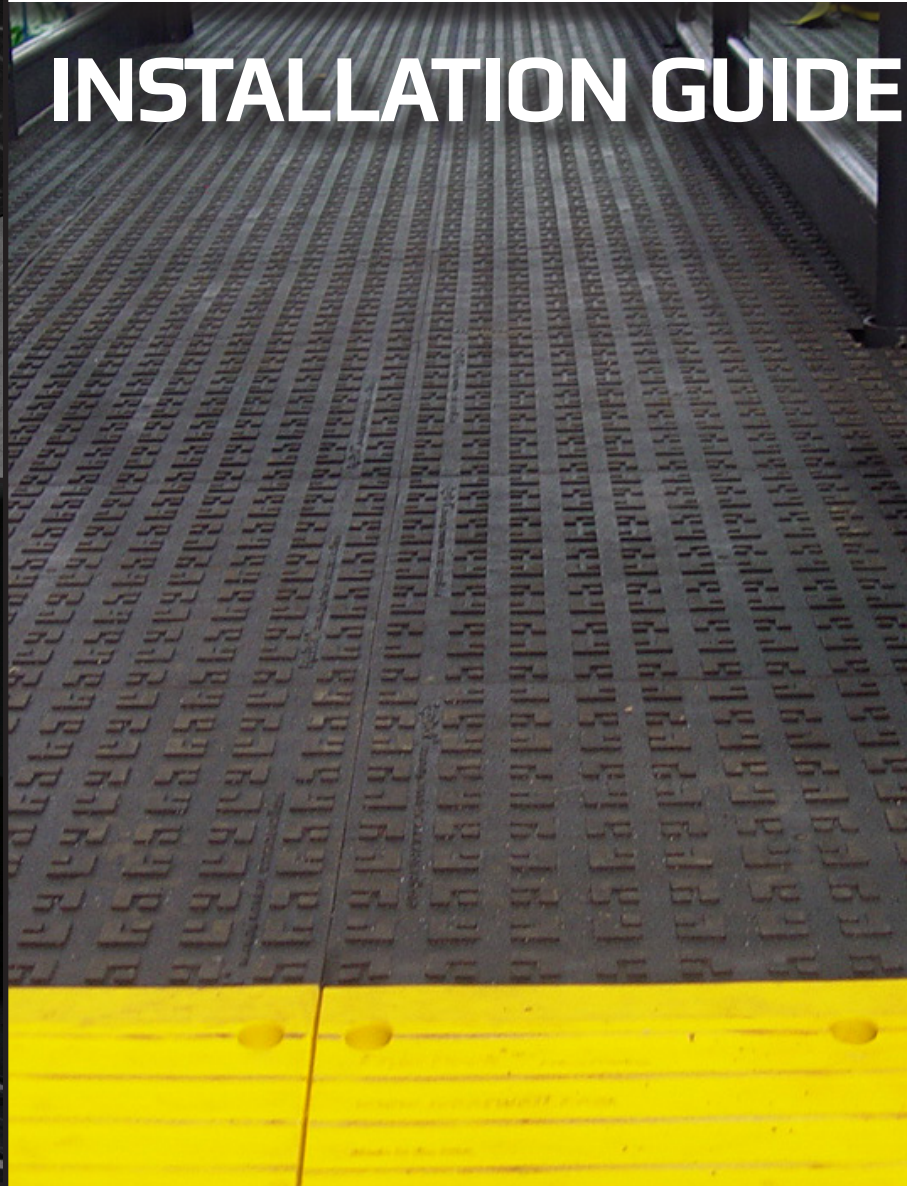


WEARWELL®

INSTALLATION GUIDE



ERGONOMIC FLOORING



Full custom ergonomic flooring is what sets Wearwell apart from the rest. Our manufacturing process allows for a variety of cutouts, configurations and shapes. This guide illustrates how to install Wearwell Ergonomic Flooring products:

Rejuvenator® | ErgoDeck® | F.I.T.™

Please **read through all of the steps before beginning** your project. For questions, contact us at:

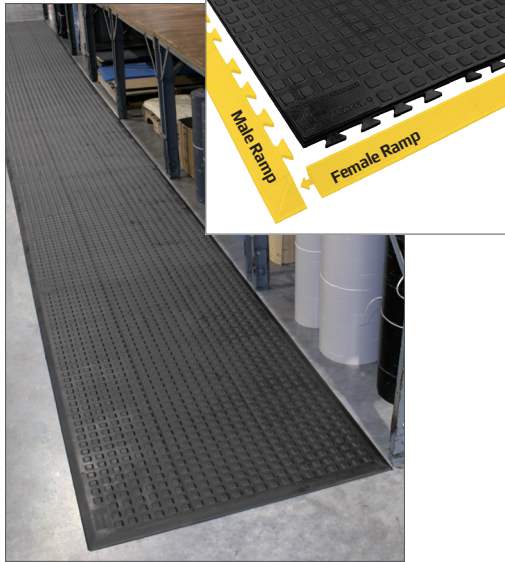
Wearwell, Inc.
199 Threet Industrial Road, Smyrna, TN 37167
Phone: 800.264.3030
Fax: 800.874.4551
E-Mail: info@wearwell.com
www.wearwell.com



Product Overview

Each ergonomic flooring product is uniquely designed for a totally flexible floor layout design. Below is a brief description of each available ergonomic flooring product and information regarding its construction.

Rejuvenator®



- Rejuvenator is the ultimate ergonomic floor in terms of comfort and construction.
- Large modular tiles interlock on all four sides to customize on-site virtually any flooring configuration.
- Interlocking ends and centers are also available to quickly and easily fabricate long runners.
- These runner components have built in borders that eliminate the need for separate edging and reduces costs and installation time.

Each Rejuvenator Tile has:

- Nine (9) male connectors on two adjacent sides.
- Nine (9) corresponding, hidden female connectors on the other two sides.

Area Preparation



Prepare the Floor

- This product is recommended for interior, mostly dry areas of heavy traffick and usage.
- It is recommended to sweep the surface of dust and debris before beginning.

Required Tools

- Utility knife or industrial shears
- Leather or Kevlar® gloves
- Measuring tape
- Straight edge

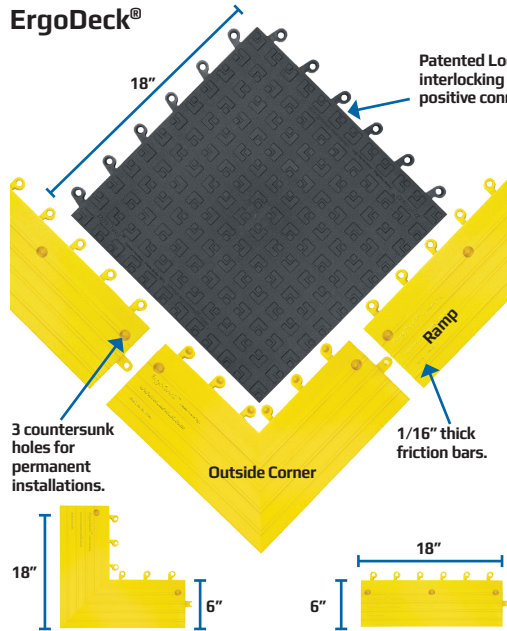
Optional Cutting Tools

- Skil® saw
- Band saw

Optional Supplies

- Super glue (for permanent installations)

ErgoDeck®

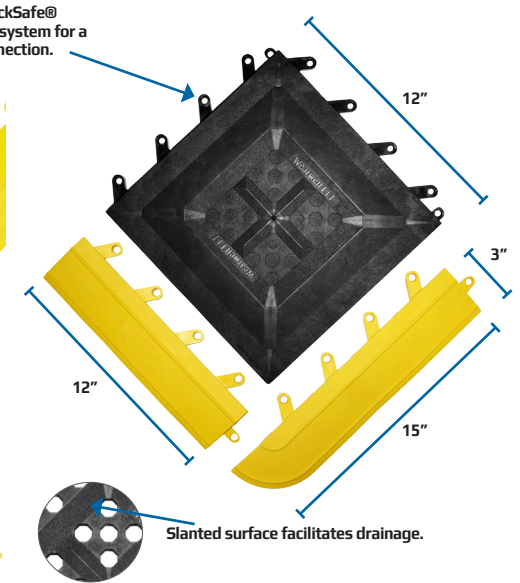


- A comfortable, ergonomic floor that will withstand heavy use.
- Tiles can be unlocked and repositioned as work centers change to fit your needs.
- Optional 6" side safety ramps and corners are available.
- Solid and drainage designs offered in 3 comfort levels: Heavy Duty (heavy use) and General Purpose (more comfort and light cart traffic) and Comfort (for optimum relief for foot traffic.) For optimum traction choose one of our 2 versions with No-Slip Cleats.

Each ErgoDeck Tile has:

- Six (6) female LockSafe connectors on two adjacent sides.
- Six (6) corresponding, hidden male connectors on the other two sides.

F.I.T.™ Functional Interlocking Tiles



- The most versatile 12" x 12" and 100% Silicone-free interlocking ergonomic flooring system in the market.
- Tiles snap together and configure to fit your workspace.
- The top surface and underside of F.I.T. tiles are designed to allow rapid drainage of fluids.
- F.I.T. tiles stay together very well making them ideal as a liner for mobile tool storage bins that require frequent removal for cleaning purposes.

Each F.I.T.™ Tile has:

- Four (4) female LockSafe connectors on two adjacent sides.
- Four (4) corresponding, hidden male connectors on the other two sides.



RECOMMENDED:
Wear protective gloves when using a cutting tool or handling products with a grit surface. We recommend leather or Kevlar® gloves.

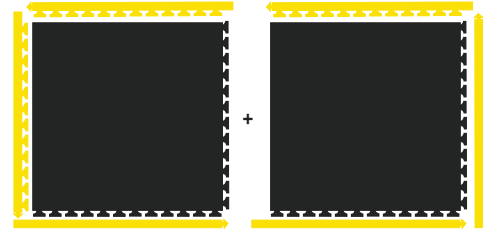


STEP 1.

- To cover your work area, always align the mats so that the connectors are positioned in the same direction, as illustrated:

1

Rejuvenator for custom areas.

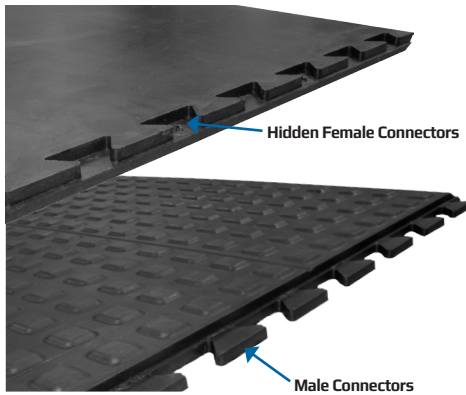


Rejuvenator for longer runners.



STEP 2.

- Lay the first mat over the second, placing the female side over the male interlocks.



PERMANENT INSTALLATION:

Place a drop of "SuperGlue" on the male connectors and press down lightly for 5 seconds. Repeat this process completing one row at a time.

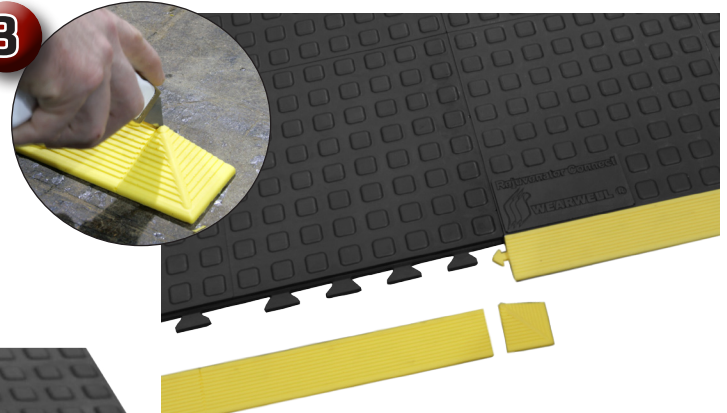
2



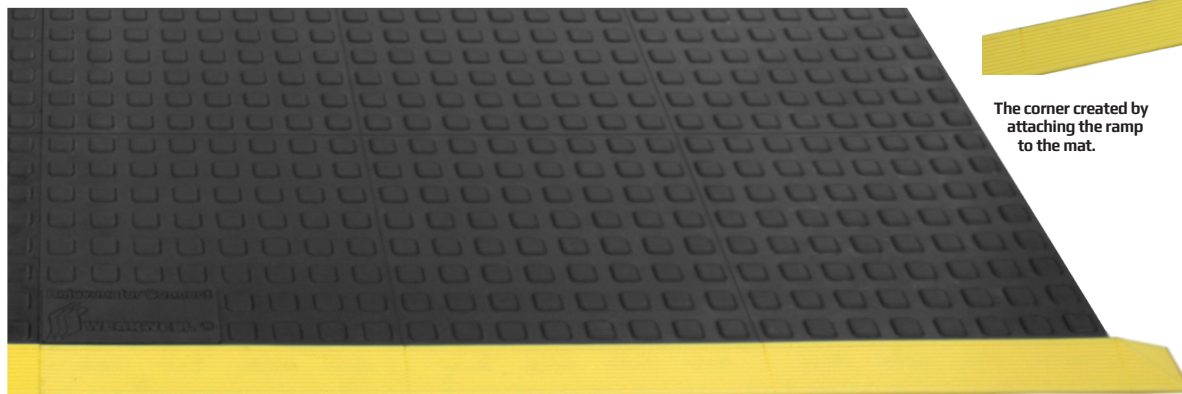
STEP 3.

- Attach safety ramps to the mats. After the ramps are attached, the corner section must be cut off the rest of the ramps and installed along that edge.
- Simply cut this corner off with a utility knife or a large shears. Use the indented line on the surface of the ramp as a guide.
- When attaching the safety ramps, it is best to start at one end of the mat installation and work your way around. The end of the first ramp will create a corner.

3



The corner created by attaching the ramp to the mat.





IMPORTANT: Wear leather or Kevlar® gloves when cutting and handling gritted products.

STEP 1.

- Plan the layout. When laying out the area, position the tiles so that the edges without the tabs are to the inside corner. This will make installation faster and easier.

STEP 2A.

- Lay the second tile over the first, placing the male side over the female interlocks. Using a rubber mallet, secure the tiles together. Repeat this process completing one row at a time. ErgoDeck can be assembled with bare hands, but we do not recommend this method as it increases installation time.
- When our LockSafe system is totally engaged, the tiles are accurately aligned without gaps creating a neat and clean installation.

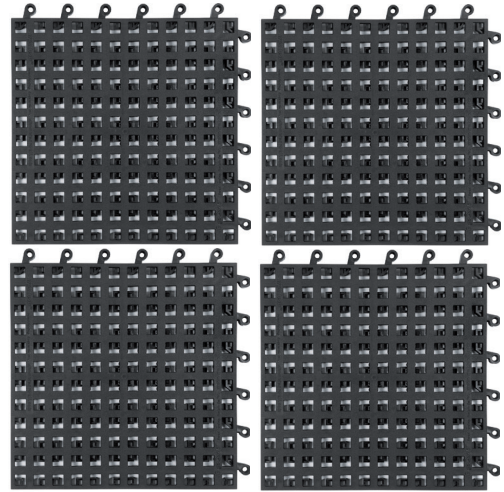
STEP 2B.

- ErgoDeck is designed for easy, on site customization. The tiles can be cut every 3" and still connect. Although the tiles and ramps can be cut with an industrial shears, if you have multiple tiles to modify, we recommend the use of a band saw or a Skil® saw. These will also insure a straight cut.
- For best results, flip the tile upside down. Cut along lines as indicated in the photo. The line equally bisects the circular support.
- To modify tiles to fit around an object or other impediment, it is not necessary to flip the tile over. Simply measure and cut along the surface.

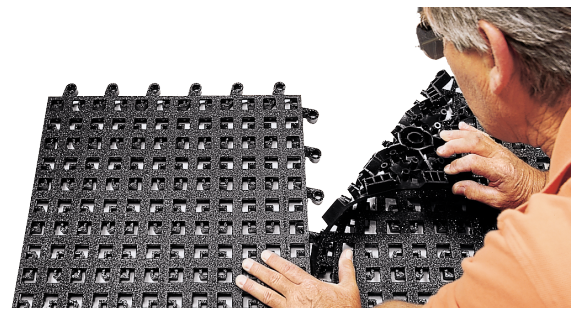
STEP 3.

- Attach safety ramps to the tiles. If you intend to add corner ramps, attach one corner and then add the other ramps from that point.
- Designed for simplicity, the ramps and corners will connect to either the male or female side of an ErgoDeck tile.
- To attach the female side of an ErgoDeck tile, simply cut these connectors off with a utility knife.
- To protect your hands when using a utility knife, always wear leather or Kevlar® gloves. These connectors can also be quickly removed using a Skil® saw.
- If a corner is used, the ramps bisect the tile connections for increased stability and support.

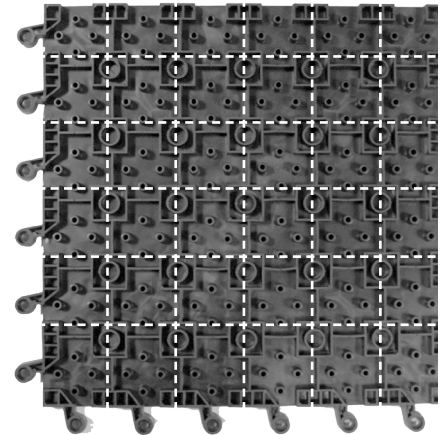
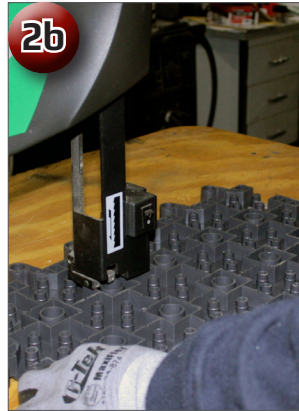
1



2a



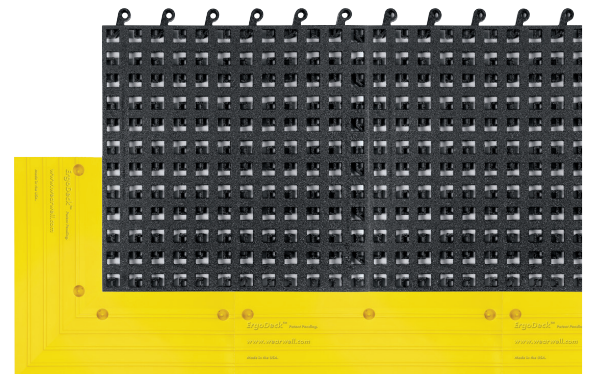
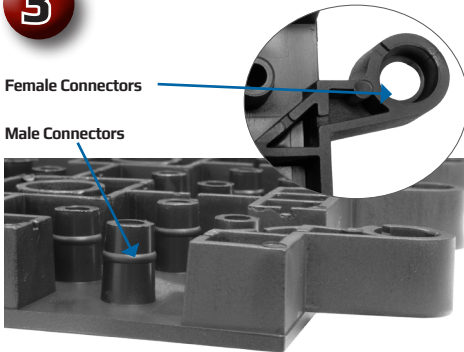
2b



3

Female Connectors

Male Connectors





STEP 1.

- Plan the layout. When laying out the area, position the tiles so that the edges without the tabs are to the inside corner. This will make installation faster and easier.

STEP 2.

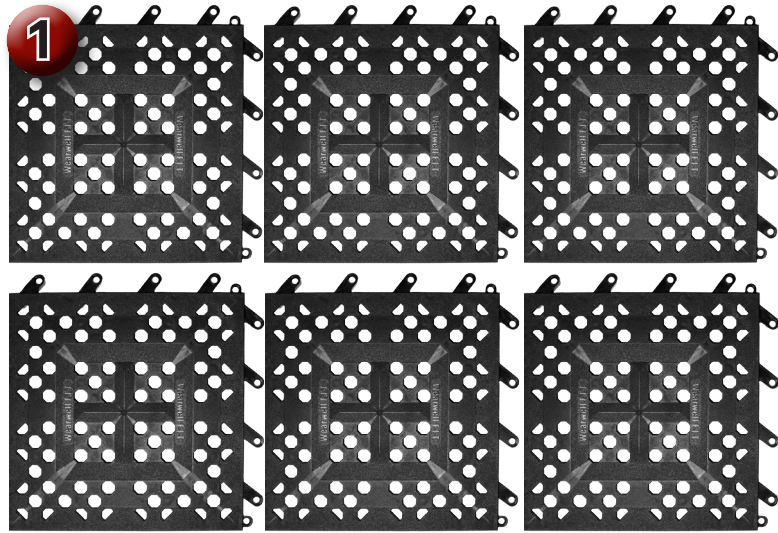
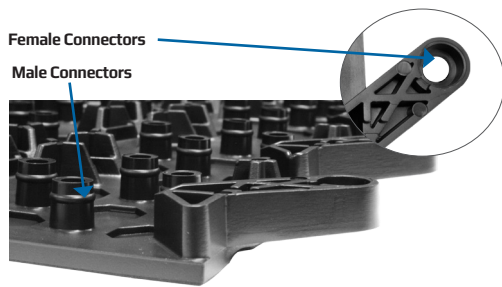
- Lay the second tile over the first, placing the male side over the female interlocks.
- Using a rubber mallet, secure the tiles together. Repeat this process completing one row at a time. F.I.T. can be assembled with bare hands, but using a mallet simplifies the installation process.

STEP 3.

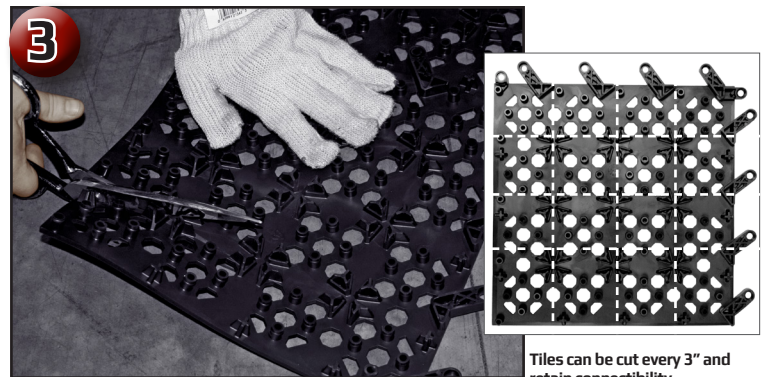
- F.I.T. is designed for on site customization. The tiles can be cut every 3" and still connect. Just cut the tiles and reconnect for a seamless installation.

STEP 4.

- Attach safety ramps to the tiles. Designed for simplicity, the ramps and ramps with corners will connect to either the male or female side of a F.I.T. tile.
- All ramps are manufactured with the female connectors and easily "lock" to the male side of a F.I.T. tile.
- Although the tiles and ramps can be cut with an industrial shears, if you have multiple tiles to modify, we recommend the use of a band saw or a Skil® saw. These will also insure a straight cut.

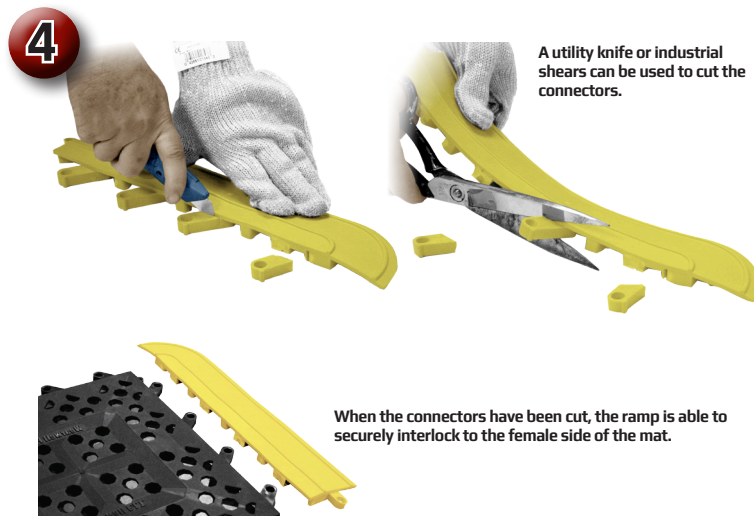


Line the tiles next to each other and then use a mallet to expedite installation.



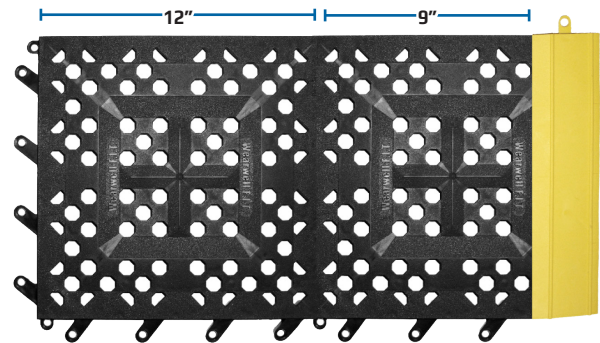
Use a utility knife or sharp shears to cut tiles.

Tiles can be cut every 3" and retain connectivity.



A utility knife or industrial shears can be used to cut the connectors.

When the connectors have been cut, the ramp is able to securely interlock to the female side of the mat.



To attach the ramp to the female side of a F.I.T. tile, simply cut these connectors off with a utility knife or an industrial shears.



WEARWELL®

INSTALLATION GUIDE

EF-INSTALLATION070913

Wearwell, Inc.
199 Threet Industrial Rd
Smyrna, TN 37167
Phone: 800-264-3030
Fax: 800-874-4551
E-mail: info@wearwell.com
www.wearwell.com

Copyright © 2013 by Wearwell®. All rights reserved. Printed in the USA. No part of this publication may be reproduced, stored in a retrieval system or transmitted in any form by any means, electronic, mechanical, photocopying, recording or otherwise, without prior written permission by Wearwell, Inc.