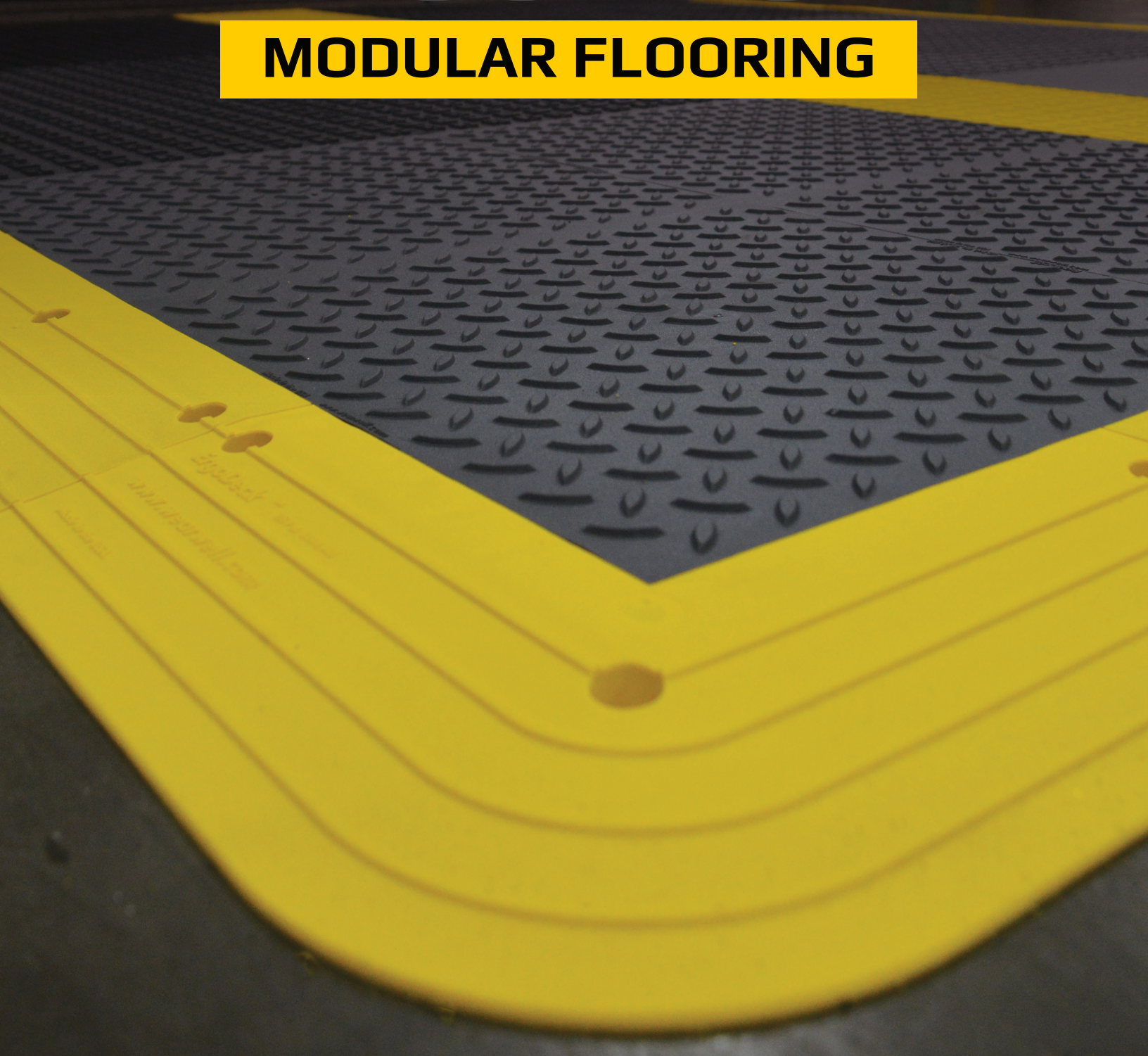


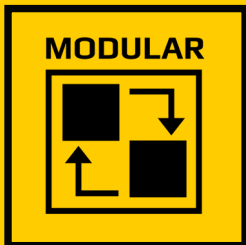
# ERGODECK®

**MODULAR FLOORING**



 **WEARWELL®**  
PREVENT. PERFORM. COMPETE.





Your team is geared up, coached up and trained up, but are they up to the challenge of performing on hard, unforgiving concrete?

All across the globe, Industrial arenas like yours agree- ErgoDeck® is the optimum flooring solution. Like you, they look to improve safety, productivity, performance and the health of their teams.

### **POSITIVE INTERLOCKING SYSTEM**

Our 100% secure patented interlocking system prevents tiles from separating yet zips apart for reconfiguration.

### **VARIETY**

Choose the surface pattern, compound and color that suits your unique needs.

### **EASY TO INSTALL**

Large 18" x 18" (46 cm x 46 cm) tiles cover large areas quickly.

### **CUSTOMIZATION**

Tiles can be customized in 3" (8 cm) increments to create unique lengths, widths and shapes.

### **VALUE**

Easily replace single tiles or sections as needed. This keeps replacement costs down!

### **WALL-TO-WALL ERGODECK®**

All styles of ErgoDeck® connect together. So go ahead, mix and match and create a wall-to-wall ErgoDeck masterpiece!

### **UNIVERSAL EDGING SYSTEM**

The 6" (15 cm) wide safety ramps work on our entire line of ErgoDeck tiles.

# ERGODECK MAX

## ErgoDeck® MAX 598, 599, & 600

**Good for heavy foot traffic  
in dry areas**

**Color(s):** Black or Charcoal

**Style:** Solid

**Compound:** General Purpose PVC  
Nitricell® Sponge join forces to fight  
workplace fatigue

**Structure:** Box-Spring Outer Edge  
Impact Absorbing Sponge



**ErgoDeck® MAX** Our greatest innovation to date, combines the customization of ErgoDeck® with the comfort of our premium Nitricell® sponge! It delivers both structural support AND impact absorption for healthier, more productive employees, even in multi-shift operations.

Choose from our popular General Purpose pattern (**#598**) as shown, or our rugged Diamond-Plate Surface, (**#599**) or our Smooth Surface (**#600**) for pivoting and easy cleaning.



**Underside**

# DIAMOND-PLATE

## ErgoDeck® Diamond-Plate 590 & 591

**Good for heavy foot traffic  
and light cart traffic in dry,  
wet, and oily areas**

**Color(s):** Black or Charcoal

**Style:** Solid

**Compound:** General Purpose Com-  
presses or Heavy Duty

**Structure:** Box-Spring Rugged, Indus-  
trial Diamond-Plate Surface



**ErgoDeck® Diamond-Plate** scores across the board.

The box-spring foundation compresses under foot providing anti-fatigue benefits and the necessary structure to support heavier traffic patterns. The All-Star Diamond-Plate surface pattern delivers dependable traction and gives you the Industrial look your facility has come to appreciate. All styles of ErgoDeck® connect together. So go ahead, mix and match with the ErgoDeck® that you already have in your facility!

**Learn more @ [Wearwell.com/ErgoDeckFlooring](https://www.wearwell.com/ErgoDeckFlooring)**



# GENERAL PURPOSE



Choose from our most popular in-stock colors



White (WH) Blue (BL) Green (GN) Yellow (YL) Red (RD)

or create your own if you order a minimum of 50 cases



## ErgoDeck® General Purpose 564, 565, 566, & 567

**Good for foot traffic in dry and wet areas**

**Color(s):** Black or Charcoal (#565)

**Style:** Solid or Drainage

**Compound:** (Softer) compresses under foot to fight fatigue

**Structure:** Box-Spring structure for heavier foot traffic patterns

Add GRITSHIELD™ for additional traction (Charcoal Only)



## ErgoDeck® Comfort 556

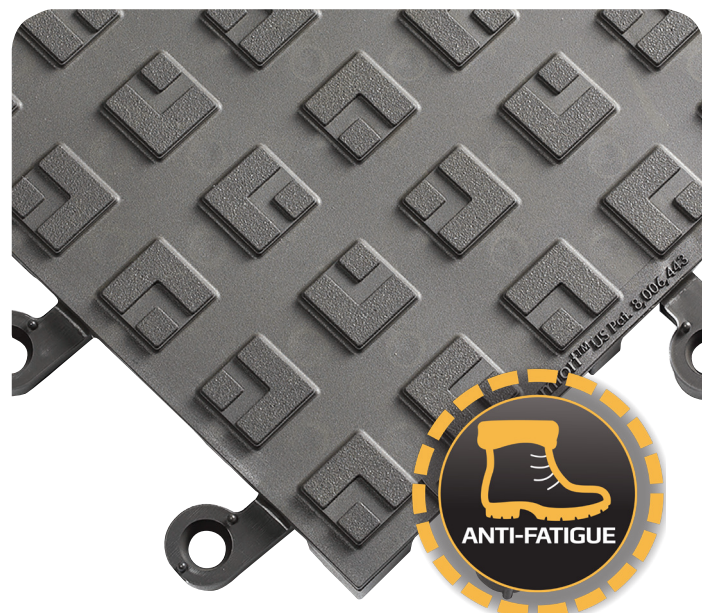
**Good for standing employees and light foot traffic in dry and wet areas**

**Color(s):** Charcoal

**Style:** Solid

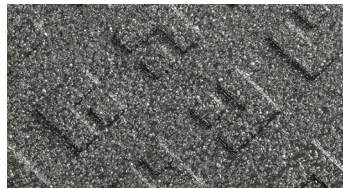
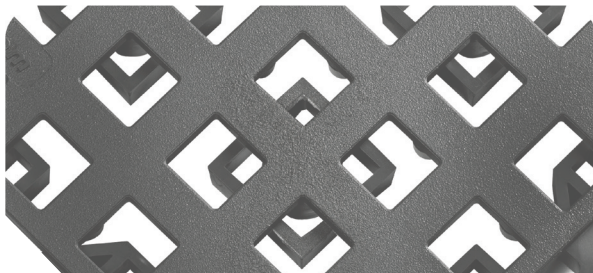
**Compound:** General Purpose to fight fatigue

**Structure:** "Sprint-only" design compresses underfoot for rubber-like feel





# HEAVY DUTY



563 ErgoDeck® GRITSHIELD™



## ErgoDeck® Heavy Duty 560, 561, 562 & 563

**Good for heavy loads and foot traffic in a wide range of tough environments even over grating and catwalks**

**Color(s):** Black

**Style:** Solid or Drainage

**Compound:** Heavy Duty Chemically Resistant Material

**Structure:** Box-Spring structure for heavier loads

Add GRITSHIELD™ for additional traction (Black Only)



## ErgoDeck® Smooth 568 & 569

**Good for standing, pivoting employees and cart traffic in dry, wet, and oily areas**

**Color(s):** Black or Charcoal

**Style:** Solid

**Compound:** General Purpose or Heavy Duty Compound

**Structure:** Box-Spring structure for foot traffic and wheeled traffic





# CLEATED

## ErgoDeck® Integrated No-Slip Cleats 552

**Good for adding traction in  
wet, oily, and slippery areas**

**Color(s):** Black

**Style:** Solid

**Compound:** Heavy Duty, Chemical Resistant  
PVC with molded No-Slip Cleats

**Structure:** Box Spring  
Adds structure, support and can be installed  
over grating



## ErgoDeck® Integrated No-Slip Cleats 553

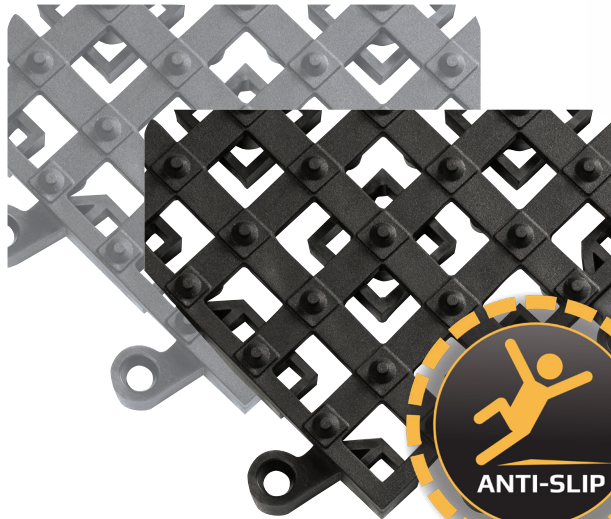
**Good for adding traction in  
wet, oily, and slippery areas**

**Color(s):** Black or Charcoal

**Style:** Drainage

**Compound:** Heavy Duty, Chemical Resistant  
PVC with molded No-Slip Cleats

**Structure:** Box Spring  
Adds structure, support and can be installed  
over grating



# ESD

## ErgoDeck® ESD 557

**Good for ESD prevention. Must be  
used over a conductive sub-floor**

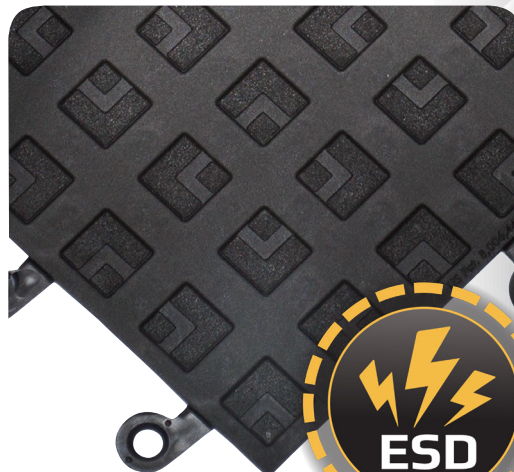
**Color(s):** Black

**Style:** Solid

**Compound:** TPO/Carbon blend ensures static  
dissipation

**ESD Rating:**  
EOS/ESD S7.1: 1x10<sup>6</sup>-1x10<sup>10</sup>

**1 Year Warranty**





## ERGODECK® WORKSTATION KITS

Each ErgoDeck Kit has everything you need to set up an ergonomic workstation in minutes. ErgoDeck rivals most rubber mats for maintenance, chemical resistance and performance. No other interlock can touch the secure LockSafe® system! Regardless of the field of play, ErgoDeck Kits deliver!

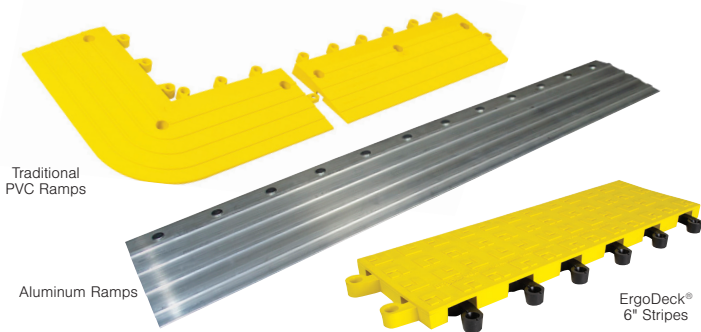
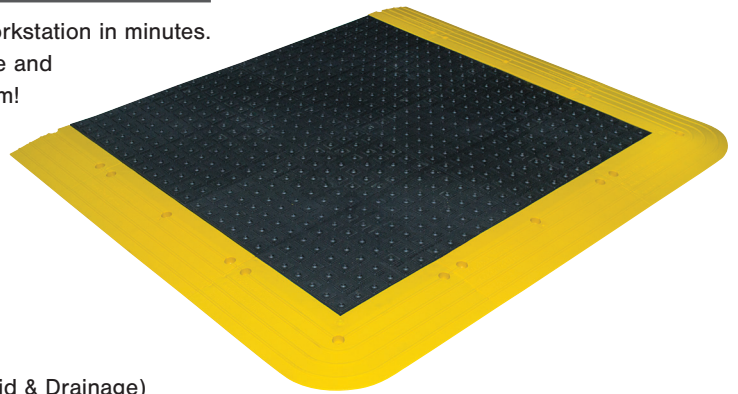
- Each kit contains enough tiles and ramps to build a workstation mat
- No tools or cutting required

### We have KITS in 3 sizes

- 42" x 48" (107 cm x 122 cm)
- 42" x 66" (107 cm x 168 cm)
- 42" x 84" (107 cm x 213 cm)

### KITS are available in 4 styles

- ErgoDeck® MAX
- Comfort Solid
- General Purpose Solid
- Integrated No-Slip Cleats (Solid & Drainage)



Traditional PVC Ramps

Aluminum Ramps

ErgoDeck® 6" Stripes

## UNIVERSAL RAMP SYSTEM

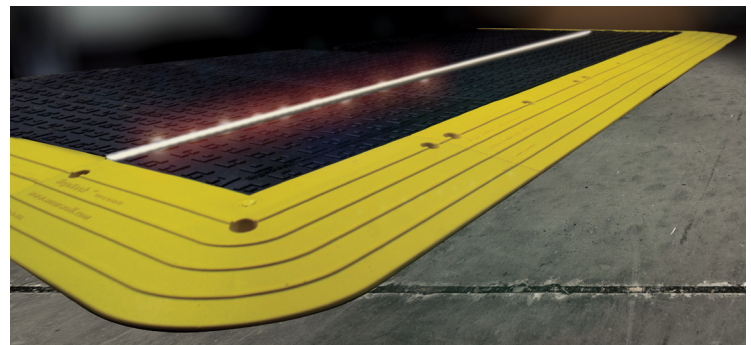
ErgoDeck PVC or Aluminum Ramps, Corners and 6" Stripe w/LockSafe Connectors

Look for product family 560, 561, 566-ED6

- 6" (15 cm) wide ramps
- Prevent trip hazards
- Allows easy on/off access for wheeled traffic
- Provides a visual cue to change in plane
- PVC Colors: Black & Yellow
- NEW! Aluminum are high-strength, lightweight and they are chemical resistant

## LOCKSAFE® CONNECTORS

- Expand the customizability of all ErgoDeck® flooring and ramps!
- Easily connect any to male connection points with a LockSafe® Connector

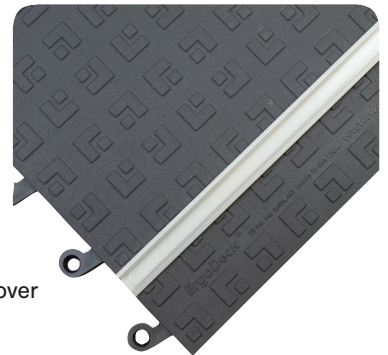


## ERGODECK® ILLUMINATE SYSTEM

### A Bright Idea from Wearwell

ErgoDeck® Illuminate (#566-LED) tiles offer a convenient way to lighten up poorly lit work areas from the floor up. Each tile can accommodate up to five Illuminate channels. The system is extremely simple, flexible and cost effective. Wearwell provides the customized ErgoDeck tiles, the aluminum channel and the protective clear or frosted lens for the channel. The customer chooses the LED lighting (sold separately) from the huge array of options available in the marketplace.

- Aluminum Channels
- Clear or frosted protective cover
- Improves visibility
- Supports quality assurance





# NOT SURE WHERE TO START?



**Wearwell's Technical Sales Hotline**  
**CONTACT US: 888-413-7317**  
**techsales@wearwell.com**

## The Wearwell Site-Survey is Free of Charge

This service is valued at \$2,000, but we provide it at no charge with confidence we will earn your business.

## Backed by 65 Years of Expertise

You could purchase competitor products, but we are confident you won't find any that can compare to the quality and value of a **Wearwell product**. We are the industry experts

## Your Team, Your Plan

You can prioritize based on your time-line and budget.

## Work with Your Current Distributors

With our large network of top notch distributors, purchasing Wearwell flooring and matting is simple and convenient.



**WEARWELL®**

For more information on FOUNDATION™ by Wearwell, check out our website @ [Wearwell.com](http://Wearwell.com) or call 800.264.3030 to place your order

## OFFICES

Wearwell, LLC (Headquarters)  
Phone: 615.254.8381  
or 1.800.264.3030  
[info@wearwell.com](mailto:info@wearwell.com)

Wearwell Europe LTD  
Phone: 44 1525 307271  
[info@wearwell-europe.co.uk](mailto:info@wearwell-europe.co.uk)

## WEBSITES

US  
[wearwell.com](http://wearwell.com)  
MEXICO  
[wearwell.com/mx](http://wearwell.com/mx)  
CANADA  
[wearwell.com/ca](http://wearwell.com/ca)

UK & IRELAND  
[wearwell.com/uk](http://wearwell.com/uk)  
FRANCE  
[wearwell.com/fr](http://wearwell.com/fr)  
GERMANY  
[wearwell.com/de](http://wearwell.com/de)